

2651 Duplex Double-Acting Piston Pump

Specifications

Pump Size:

maximum piston size x stroke length, in.(mm):
5-1/2 x 12 (139.7 x 304.8)

Rated BHP (kW) at 85 RPM (Crankshaft speed):
250 (187)

Rated piston load, pounds (kg): 22100(10025)

Maximum discharge pressure, psi (kPa):
1760 (12134)

Pinion gear ratio: 5.05:1

Pinion shaft extension:

Diameter, in.(mm): 4.250 (107.95)

Length, in.(mm): 18.750 (476.25)

Keyway width x depth, in.(mm):

1 x 1/2 (25.4 x 12.7)

Maximum recommended sheave diameter,
in.(mm): 63 (1600)

For larger sheave diameters:

Contact Factory

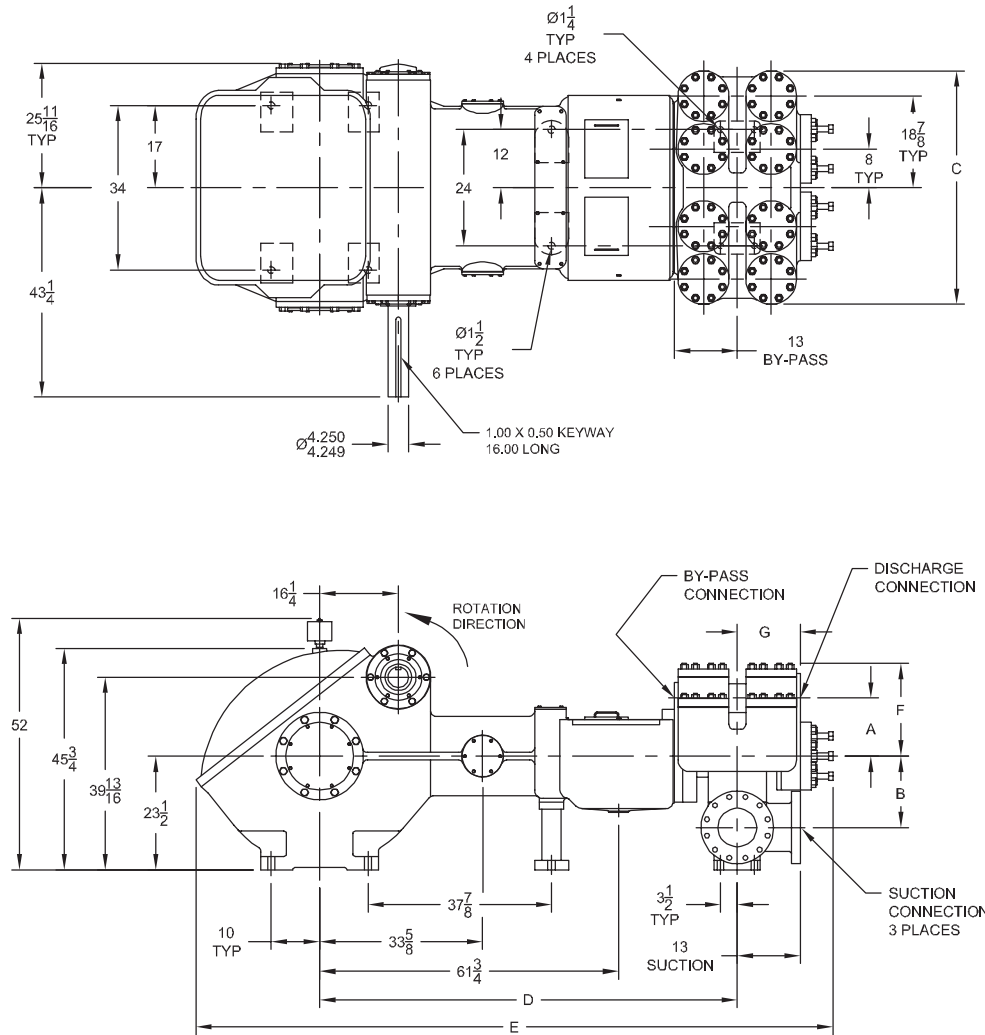
Oil Capacity, gallons (L): 25.0 (94.6)

Weight, pump only on

wood shipping skids, pounds (kg): 16000(7258)

Standard Materials for Fluid End Bodies:

Cast Steel



Pump Model	Flange Connections			Dimensions (Inches)						
	Discharge Connection Sizes	Suction Connection Sizes	By-Pass Connection Sizes	A	B	C	D	E	F	G
2651	4 (101.6)-ANSI 900 FF	8 (203.2)-ANSI 300 FF	2 (50.8)-ANSI 1500 FF	10 1/2	14 3/4	49 1/2	86 1/4	131 13/16	17 5/8	13 1/4

IEQ Industries

P.O BOX 123 * ADA, * MI 49301 * USA
 PHONE 800.544.9053 * FAX 888.796.2653 *
 email: info@gaso.com
 On the Web at www.gaso.com

 **NATIONAL OILWELL VARCO**

2651 Duplex Double-Acting Piston Pump

Performance Data

PUMP	English Units					25 RPM		40 RPM		55 RPM		70 RPM		85 RPM	
	Piston Dia. In.	Piston Area Sq. In.	BPD per RPM	GPM per RPM	Max. Press. PSI	BPD	GPM	BPD	GPM	BPD	GPM	BPD	GPM	BPD	GPM
2651	4.000	12.5664	78.3840	2.2862	1760	1960	57.2	3136	91.4	4312	125.7	5487	160.0	6663	194.3
	4.500	15.9043	102.096	2.9778	1390	2553	74.4	4084	119.1	5616	163.8	7147	208.4	8679	253.1
	5.000	19.6349	128.712	3.7541	1126	3218	93.9	5149	150.2	7080	206.5	9010	262.8	10941	319.1
	5.500	23.7583	158.064	4.6102	930	3952	115.3	6323	184.4	8694	253.6	11065	322.7	13436	391.9
Brake Horsepower Required						74		118		162		206		250	

PUMP	Metric Units					25 RPM		40 RPM		55 RPM		70 RPM		85 RPM	
	Plunger Dia. mm	Plunger Area cm ²	M ³ /Hr per RPM	L/Sec. per RPM	Max. Press. kPa	M ³ /Hr	L/Sec.	M ³ /Hr	L/Sec.	M ³ /Hr	L/Sec.	M ³ /Hr	L/Sec.	M ³ /Hr	L/Sec.
2651	102	81.073	0.5192	0.1442	12134	13.0	3.6	20.8	5.8	28.6	7.9	36.3	10.1	44.1	12.3
	114	102.608	0.6763	0.1879	9581	16.9	4.7	27.1	7.5	37.2	10.3	47.3	13.2	57.5	16.0
	127	126.677	0.8526	0.2368	7760	21.3	5.9	34.1	9.5	46.9	13.0	59.7	16.6	72.5	20.1
	140	153.279	1.0470	0.2909	6414	26.2	7.3	41.9	11.6	57.6	16.0	73.3	20.4	89.0	24.7
Kilowatts Required						55		88		121		154		187	

For operation below 54 RPM, an auxiliary lubrication system is required.

RPM shown is Crankshaft speed. For Pinion Shaft speed, multiply RPM by Gear Ratio. Volumetric Rate is based on 100% Volumetric Efficiency. Brake Horsepower/Kilowatts Required is based on 85% Mechanical Efficiency.

The information and data on this sheet is accurate to the best of our knowledge and belief, but are intended for general information only. Applications suggested for the materials are described only to help readers make their own evaluations and decisions, and are neither guarantees nor to be construed as express or implied warranties of suitability for these or other applications. National Oilwell makes no warranty either express or implied beyond that stipulated in National Oilwell Standard Terms and Conditions of Sale.

IEQ Industries

P.O BOX 123 * ADA, * MI 49301 * USA
 PHONE 800.544.9053 * FAX 888.796.2653 *
 email: info@gaso.com
 On the Web at www.gaso.com

 **NATIONAL OILWELL VARCO**

2652 Duplex Double-Acting Piston Pump

Specifications

Pump Size:

maximum piston size x stroke length, in.(mm):
7-1/4 x 12 (184.2 x 304.8)

Rated BHP (kW) at 85 RPM (Crankshaft speed):
258 (192)

Rated piston load, pounds (kg): 22100(10025)

Maximum discharge pressure, psi (kPa):
1125 (7757)

Pinion gear ratio: 5.05:1

Pinion shaft extension:

Diameter, in.(mm): 4.250 (108.0)

Length, in.(mm): 18.750 (476.3)

Keyway width x depth, in.(mm):

1 x 1/2 (25.4 x 12.7)

Maximum recommended sheave diameter,
in.(mm): 63 (1600)

For larger sheave diameters:

Contact Factory

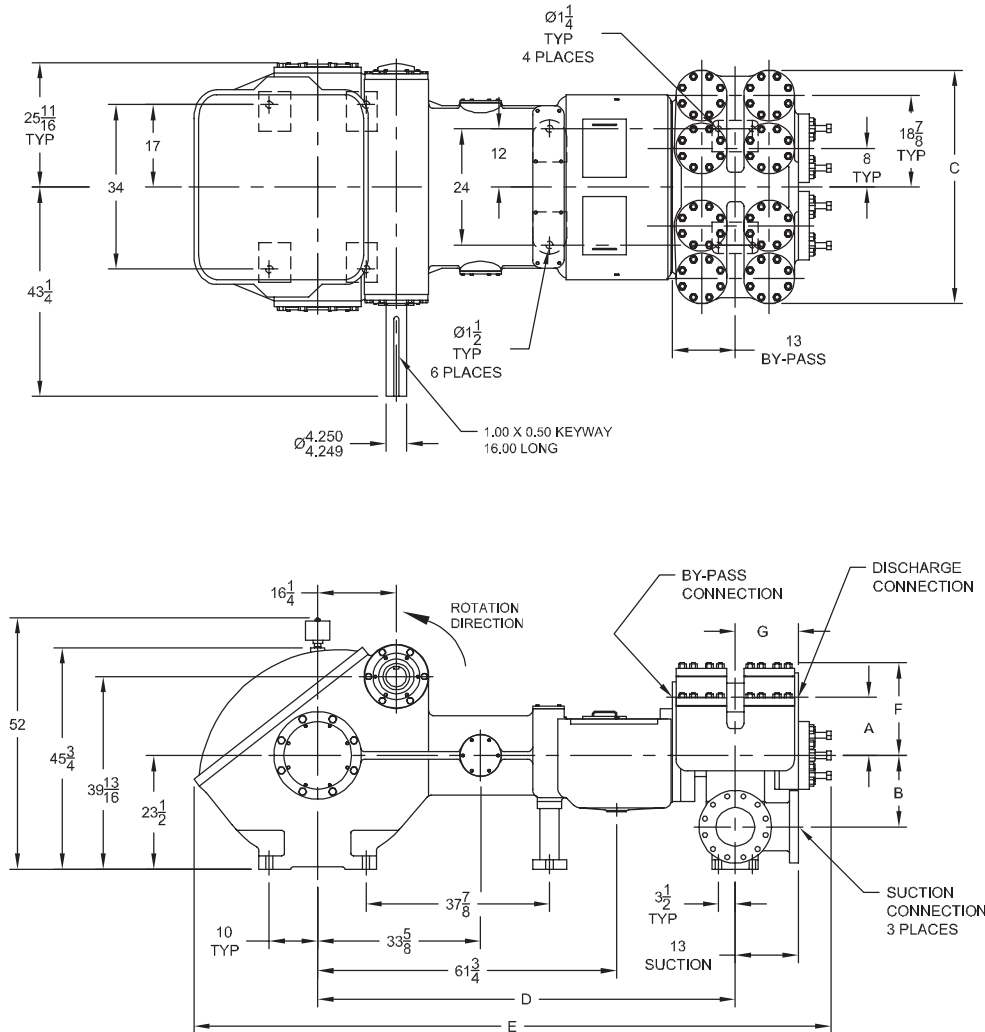
Oil Capacity, gallons (L): 25.0 (94.6)

Weight, pump only on

wood shipping skids, pounds (kg): 15500(7031)

Standard Materials for Fluid End Bodies:

Cast Steel



Pump Model	Flange Connections			Dimensions (Inches)						
	Discharge Connection Sizes	Suction Connection Sizes	By-Pass Connection Sizes	A	B	C	D	E	F	G
2652	4 (101.6)-ANSI 600 FF	8 (203.2)-ANSI 300 FF	2 (50.8)-ANSI 600 FF	1	14 3/4	49 1/2	86 1/4	131 9/16	19 1/8	1

IEQ Industries

P.O BOX 123 * ADA, * MI 49301 * USA
PHONE 800.544.9053 * FAX 888.796.2653 *
email: info@gaso.com
On the Web at www.gaso.com

 **NATIONAL OILWELL VARCO**

2652 Duplex Double-Acting Piston Pump

Performance Data

PUMP	English Units					25 RPM		40 RPM		55 RPM		70 RPM		85 RPM	
	Piston Dia. In.	Piston Area Sq. In.	BPD per RPM	GPM per RPM	Max. Press. PSI	BPD	GPM	BPD	GPM	BPD	GPM	BPD	GPM	BPD	GPM
2652	4.000	12.5664	78.3840	2.2862	1125	1960	57.2	3136	91.4	4312	125.7	5487	160.0	6663	194.3
	4.500	15.9043	102.096	2.9778	1125	2553	74.4	4084	119.1	5616	163.8	7147	208.4	8679	253.1
	5.000	19.6349	128.712	3.7541	1125	3218	93.9	5149	150.2	7080	206.5	9010	262.8	10941	319.1
	5.500	23.7583	158.064	4.6102	930	3952	115.3	6323	184.4	8694	253.6	11065	322.7	13436	391.9
	6.000	28.2743	190.296	5.5503	782	4758	138.8	7612	222.0	10467	305.3	13321	388.5	16176	471.8
	6.500	33.1830	225.120	6.5660	666	5628	164.2	9005	262.6	12382	361.1	15759	459.6	19136	558.1
	7.000	38.4845	262.968	7.6699	574	6575	191.7	10519	306.8	14464	421.8	18408	536.9	22353	651.9
	7.250	41.2825	283.272	8.2621	535	7082	206.6	11331	330.5	15580	454.4	19830	578.3	24079	702.3
Brake Horsepower Required						76		121		167		213		258	

PUMP	Metric Units					25 RPM		40 RPM		55 RPM		70 RPM		85 RPM	
	Plunger Dia. mm	Plunger Area cm ²	M ³ /Hr per RPM	L/Sec. per RPM	Max. Press. kPa	M ³ /Hr	L/Sec.	M ³ /Hr	L/Sec.	M ³ /Hr	L/Sec.	M ³ /Hr	L/Sec.	M ³ /Hr	L/Sec.
2652	102	81.073	0.5192	0.1442	7757	13.0	3.6	20.8	5.8	28.6	7.9	36.3	10.1	44.1	12.3
	114	102.608	0.6763	0.1879	7757	16.9	4.7	27.1	7.5	37.2	10.3	47.3	13.2	57.5	16.0
	127	126.677	0.8526	0.2368	7757	21.3	5.9	34.1	9.5	46.9	13.0	59.7	16.6	72.5	20.1
	140	153.279	1.0470	0.2909	6414	26.2	7.3	41.9	11.6	57.6	16.0	73.3	20.4	89.0	24.7
	152	182.415	1.2605	0.3502	5389	31.5	8.8	50.4	14.0	69.3	19.3	88.2	24.5	107.1	29.8
	165	214.084	1.4911	0.4142	4592	37.3	10.4	59.6	16.6	82.0	22.8	104.4	29.0	126.7	35.2
	178	248.286	1.7418	0.4839	3959	43.5	12.1	69.7	19.4	95.8	26.6	121.9	33.9	148.1	41.1
	184	266.338	1.8763	0.5213	3691	46.9	13.0	75.1	20.9	103.2	28.7	131.3	36.5	159.5	44.3
Kilowatts Required						57		91		125		158		192	

For operation below 54 RPM, an auxiliary lubrication system is required.

RPM shown is Crankshaft speed. For Pinion Shaft speed, multiply RPM by Gear Ratio. Volumetric Rate is based on 100% Volumetric Efficiency. Brake Horsepower/Kilowatts Required is based on 85% Mechanical Efficiency.

The information and data on this sheet is accurate to the best of our knowledge and belief, but are intended for general information only. Applications suggested for the materials are described only to help readers make their own evaluations and decisions, and are neither guarantees nor to be construed as express or implied warranties of suitability for these or other applications. National Oilwell makes no warranty either express or implied beyond that stipulated in National Oilwell Standard Terms and Conditions of Sale.

IEQ Industries

P.O. BOX 123 * ADA, * MI 49301 * USA
 PHONE 800.544.9053 * FAX 888.796.2653 *
 email: info@gaso.com
 On the Web at www.gaso.com

